

ASSOCIATION OF PET DOG TRAINERS AUSTRALIA

CONFERENCE 2009

*Bankstown Sports Club
8 Greenfield Parade, Sydney NSW*

3 – 5 October 2009

Featuring two highly acclaimed international keynote speakers

Dr Pamela Reid PhD, Certified Animal Behaviourist, and

Sarah Kalnajs BA CDBC CPDT, Certified Dog Behaviour

Consultant and Certified Pet Dog Trainer

Special guest: Dr Paul McGreevy BVSc, PhD, MRCVS, MACVSc

Excel-erate your learning



Keynote Presenters

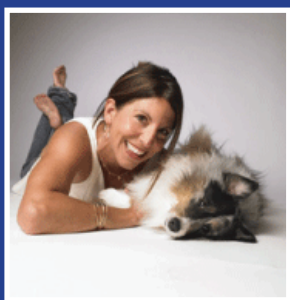


Dr Pamela Reid PhD

Pamela Reid is a certified applied animal behaviorist. She received her Ph.D. in Psychology with a specialization in animal learning and behavior from the University of Toronto. Pam is the Vice President of the ASPCA Animal Behavior Center. At the ASPCA, Pam consults with pet owners, veterinarians, trainers, legal professionals, and shelter personnel on animal behavior. She and her colleagues are developing a national program to educate people about behaviour and how to work through pet behaviour problems. Pam is also adjunct professor at the College of Veterinary Medicine, University of Illinois. In conjunction with the ASPCA, she directs a Masters Degree program in Biology with a specialization in companion animal behaviour. Prior to joining the ASPCA, Pam established a thriving behaviour consultation practice in Toronto Canada and was assistant professor with the Ontario Veterinary College, University of Guelph.

Pam lectures worldwide on animal behavior, learning theory, and agility training. She writes award-winning articles for both professional journals and popular magazines and is author of the acclaimed book *Excel-erated Learning! Explaining (in plain English) how Dogs Learn and how Best to Teach them* (James & Kenneth Publishers 1996).

Pam has served on committees for APDT, Delta Society, American Humane, PETSMART, and HSUS on topics relating to canine learning and dog training. For several years, she consulted with the US Department of Defense on the use of dogs for narcotics and explosives detection. She has served on the Animal Behavior Society's Board of Professional Certification and the Certification Council for Pet Dog Training. She is a member of the American Psychological Association, Animal Behavior Society, Comparative Cognition Society and Association of Pet Dog Trainers.



Sarah Kalnajs BA CDBC CPDT

Sarah Kalnajs is a Certified Dog Behavior Consultant (International Association of Animal Behavior Consultants) and Certified Pet Dog Trainer (Certification Council for Pet Dog Trainers) with over ten years' experience working in canine behavior, training, and research. She is the owner of Blue Dog Training & Behavior in Madison, Wisconsin.

Sarah is a professional member of the Animal Behavior Management Alliance, Association of Pet Dog Trainers, International Association of Animal Behavior Consultants and the International Institute for Applied Companion Animal Behavior. She is one of the editors of the peer-reviewed Journal of Applied Companion Animal Behavior and is a member of the advisory board and faculty of the Companion Animal Sciences Institute. Sarah is also an instructor of courses on dog related topics for Raising Canine.

Sarah is an honors graduate of the University of Wisconsin - Madison and has completed post-graduate work at Edgewood College and through the Kewalo Basin Marine Mammal Research Lab at the University of Hawaii. She is one of the first international students to complete the Canine Behavior Program conducted through the Etologisk Institute under the mentorship of Dr Roger Abrantes in Denmark. Sarah is the producer of the popular and highly praised DVD series, "Language of Dogs" and "Am I Safe".



Welcome

You are invited to the Association of Pet Dog Trainers Australia (APDT) upcoming Annual Conference to be held at the Bankstown Sports Club, Sydney 3-5 October 2009.

The Annual Conference is APDT's most important event of the year.

This year the theme of the Conference is "Excel-erate your learning" and with our keynote speakers, Dr Pamela Reid from Canada and Sarah Kalnajs from USA, offering a wealth of experience to share with the delegates, it is poised to be an exciting three days that should not be missed.

We are expecting around 300 attendees made up of trainers, shelter workers, groomers, veterinary nurses and others who give advice on a daily basis to thousands of pet owners across the country.

The Conference will also host a trade show which has proved to be a most important and popular part of our event.

I look forward to seeing you there.

Yours sincerely,
Karin Bridge
APDT President 2009

Full biographies can be found on the website: www.apdt.com.au



Bankstown Sports Club

The Venue

Bankstown Sports is a state-of-the-art venue featuring a diverse selection of entertainment, dining, accommodation and function facilities. There is something for everyone including one of Australia's largest collections of signed memorabilia for sports fans, a piazza for the taste of Italy, a stunning tropical rainforest and much, much more.

One of Sydney's top ten clubs, Bankstown Sports has over 52,000 members and supports some 38 sporting clubs representing over 8,000 sports men and women. The Club provides free, undercover car parking on site you can relax knowing your car is in a safe and secure environment.

The new, state-of-the-art Events Centre offers optimal acoustics eliminating noise transfer, ensuring the event is uninterrupted.

Bankstown Sports is central to many areas of Sydney, with the added benefit of having a Travelodge hotel intergrated within the Club.

Pre-Conference Excursion to the Zoo

Friday 2 October 2009

Ever wondered how the trainers at Taronga Zoo work with the animals to create their fabulous animal shows? Here's your chance to see first hand!

APDT has arranged an exclusive field trip to Sydney's Taronga Zoo on Friday 2 October, which promises to be a wonderful day at one of the world's best and most famous zoos.

Highlights of the day include:

- Presentations on zoo animal training by Taronga's Bird, Carnivore and Mammal trainers.
- Behind the scenes training sessions including the Lions, Sunbears or Leopard Seal shows.
- The Bird Show.
- A chance to get up close and personal with the zoo animals.
- Free time to explore the Zoo.

Your field trip registration fee includes:

- Zoo admission and maps.
- All presentations and behind the scenes sessions.
- Morning tea.
- Transport to and from Bankstown Sports Club on our private coach.
- A chance to meet other APDT members pre-conference.

Not included:

- Lunch.
- Any items purchased at the Zoo.
- Parking at the Zoo if you are taking your own transport.

Registration Fee: \$54.00 including transport \$33.00 own transport

Register ONLINE or by expressing your interest on the Registration Form

The Accommodation

Travelodge Bankstown Hotel is located within the spectacular Bankstown Sports Club and guests have access to all four of the Club's restaurants, entertainment and conference facilities.

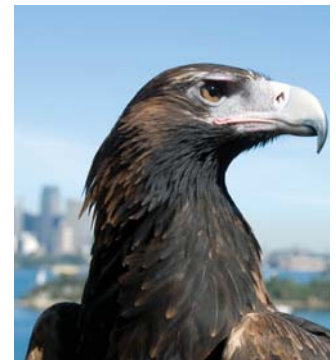
The Hotel is also close to Bankstown Airport, the Dunc Grey Velodrome and the Homebush Olympic Site, offering easy access to the area's major attractions.

The Hotel has 108 rooms in total including 4 suites offering a rate to delegates of \$155.00 (\$25.00 under the rack rate for the period of the Conference).

With the Masters Games being held over the period of the conference, the Travelodge Bankstown Hotel requires that any bookings are prepaid in full.

Bookings for rooms can be made through the Conference Registration process, either ONLINE or by completing the Registration Form in this brochure and faxing it back to the Conference Organisers.

Images courtesy of Taronga Zoo



THE APDT CONFERENCE PROGRAM

SATURDAY 3 OCTOBER

DAY 1

08.30am – 08.45am	Conference Opening - APDT President Karin Bridge
08.45am - 10.15am	Dr Pam Reid - The Stages of an Excel-erated Training Program A top-notch reward-based training program proceeds through stages: (1) get the behaviour to happen, (2) reward the behaviour, (3) achieve reliability, (4) add the cue, (5) generalize and proof the behaviour, and (6) maintain the training. We'll delve into each of these stages to ensure maximally effective and efficient learning for your dog.
10.15am - 10.45am	Morning Tea
10.45am – 12.15pm	Dr Pam Reid - The Stages of Excel-erated Learning Training Program (continued)
12.15pm – 01.15pm	Lunch
01.15pm – 02.00pm	Guest Speaker: Dr Paul McGreevy
02.00pm – 03.30pm	Sarah Kalnajs - Serious Aggression in Puppies Puppies under 16 weeks of age have the capacity to exhibit worrisome issues including severe fear, resource guarding, offensive aggression and overconfidence. It is critical for trainers that offer puppy classes or in-home services to learn how to recognize early signs of aggression seen at this age and the importance of early behavioral intervention, before the behavior was worsened through rehearsal and practice. All too often aggression in puppies is perceived as harmless and dismissed with the belief that they'll "grow out of it."
03.30pm - 04.00pm	Afternoon Tea
04.90pm – 05.30pm	Sarah Kalnajs - Serious Aggression in Puppies (continued)
06.00pm	APDT AGM

SUNDAY 4 OCTOBER

DAY 2

08.45am – 09.00am	Welcome - APDT President Karin Bridge
09.00am - 10.30am	Sarah Kalnajs - Life in the Doghouse: Living and working in a multi-dog household Recent pet ownership data reveals that almost half of dog owners in the United States live in homes with more than one dog. Multiple dog households present distinct challenges from both a training and behavior management perspective. This presentation examines the unique challenges of living in a multi-dog household (and solutions to those challenges) as well as focusing on the importance of proper introductions of new canine household members.
10.30am - 11.00am	Morning Tea
11.00am – 12.30pm	Sarah Kalnajs - Life in the Doghouse: Living and working in a multi-dog household (continued)
12.30pm - 01.30pm	Lunch

CONCURRENT SESSIONS CONCURRENT SESSIONS CONCURRENT SESSIONS CONCURRENT SESSIONS CONCURRENT SESSIONS CONCURRENT SESSIONS CONCURRENT SESSIONS

01.30pm – 03.00pm	Pam Reid - ADVANCED - This topic caters for trainers with a thorough and extensive knowledge of learning theory and it's practical application who are looking for in-depth technique analysis Train on the Cutting Edge: Advanced training theory for top achievers Are you a closet training geek? Do you lie awake at night thinking of the best way to teach your dog a new trick? Do you obsess about whether your cues are overshadowed and your secondary reinforcers conditioned optimally? Do you use a random number generator to plan your reinforcement schedule? Have you read Ken Ramirez's Animal Training from cover to cover and longed for a second volume? If you answered "yes" to any of these questions, this workshop is for you! Put away your clicker and come spend the day immersed in CRs, RRs, and NRMs at the advanced training theory presentation.	Sarah Kalnajs - BEGINNERS S.1: Back to Basics - The five cues every good dog should know In this presentation Sarah will present five key foundation behaviors using positive reinforcement training methods and demonstration dogs (or video) that are the building blocks of the "perfect" family dog. Whether you are a group trainer or private trainer, this presentation will give you the tools and know-how to successfully train your clients and their dogs.
03.00pm - 03.30pm	Afternoon Tea	
03.30pm – 05.00pm	Pam Reid - ADVANCED Train on the Cutting Edge: Advanced training theory for top achievers (continued)	Sarah Kalnajs - INTERMEDIATE S 2: Puppy Head Start This presentation will explore the Puppy Head Start program designed by Sarah Kalnajs. It is designed to supplement group puppy classes and fill in the gaps that typically aren't covered in class.
07.30pm	Conference Dinner	

THE APDT CONFERENCE PROGRAM

MONDAY 5 OCTOBER

DAY 3

08.45am – 09.00am	Welcome - APDT President Karin Bridge Introduction of Committee for 09/10 Announcements of Awards
09.00am - 10.30am	Dr Pam Reid - Canine Cognition: A glimpse into the Dog's mind Dogs' mental capabilities have been featured in Science and a host of popular media. Dogs were rarely subjects for psychological research, thanks to their extensive domestication. Now, dogs are the focus of work on cognition precisely because of their history of co-existence with humans and they are out-performing primates!
10.30am - 11.00am	Morning Tea
11.00am – 12.30pm	Dr Pam Reid - Desensitising and Counter Conditioning If you work with dogs, you will need to use desensitization and counter conditioning (DSCC). DSCC is the foundation technique used to treat most dog behaviour problems, from minor to severe. DSCC changes an animal's response to a stimulus by repeatedly presenting it at such a low level that the animal's arousal is kept to a minimum, thereby setting the animal up to habituate. Concurrently, the stimulus is paired with an outcome that elicits responses motivationally or physically incompatible with the maladaptive response. The problem response originally exhibited by the animal is "countered" by a new and different association. In this presentation, I describe how the procedure works, demonstrate applying the procedure to a variety of behaviour problems including fear and aggression, and outline the benefits and limitations of the procedure.
12.30pm - 01.30pm	Lunch
01.30pm – 03.00pm	Sarah Kalnajs - Guarding: Food, bones, toys and beyond Say "resource guarding" and most people think of dogs that aggress over food, bones and toys when, in fact, guarding is the basis of many other behavior problems as well. This presentation looks at a wide range of guarding behaviors and helps participants recognize the subtle commonalities that underlie all of them.
03.00pm - 03.30pm	Afternoon Tea
03.30pm – 05.00pm	Dr Pam Reid - Dominance Theory: Are we throwing the baby out with the bathwater? The notion that dogs necessarily invoke dominance during interactions is pervasive amongst trainers and laypeople alike. However, a backlash of protest from some trainers rejects the concept of dominance in its entirety. I argue that this is rash – we should acknowledge that something akin to dominance exists in the dog but that this mustn't prompt us into antagonistic relationships with dogs.
05.00pm	Conference Close - APDT President Karin Bridge



For more information on the conference access the website:

<http://www.onqconferences.com.au/events/APDT2009.php>

or

Contact the conference organiser

On Q Conference Support

PO Box 3711 Weston Creek ACT 2611

Tel: (02) 6288 3998

Fax: (02) 6161 4719

Email: apdt@onqconferences.com.au